

N O L I M I T S





<b>Exterior designer</b>	Fulvio De Simoni Yacht Design	
<b>Length overall</b>	45.22 m	148' 4"
<b>Moulded beam</b>	9.12 m	29' 11"
<b>Maximum draft @ half-load</b>	2.35 m	7 ft 9 in
<b>Gross tonnage</b>	<500 GT	
<b>Owner and guests</b>	2 + 8	
<b>Owner's and guest cabins</b>	1 + 4	
<b>Captain and crew members</b>	1 + 8	
<b>Captain's and crew cabins</b>	1 + 4	
<b>Hull material</b>	Aluminium	
<b>Superstructure material</b>	Aluminium	
<b>Main Engines</b>	2x Cat C32 – 2x 1,193 bkW	
<b>Propulsion system</b>	Shaft lines	
<b>Stabilizers</b>	4x Fin stabilizers	
<b>Generators</b>	3x Cat C4.4 – 3x 99 ekW	
<b>Top speed</b>	15 kn	
<b>Cruising speed</b>	12 kn	
<b>Range</b>	>4,000 nm @ 10 kn	











Beach Club



MD Cockpit





Upper Deck



Upper Deck



Upper Deck



Upper Deck



Upper Deck



Upper Deck



Upper Deck



Sundeck



Sundeck



Sundeck

# GENERAL ARRANGEMENT

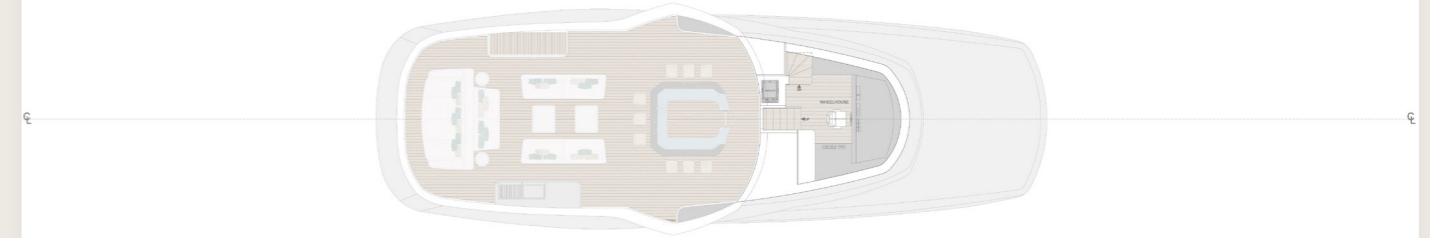
NOLIMITS 45+

NOLIMITS 45+

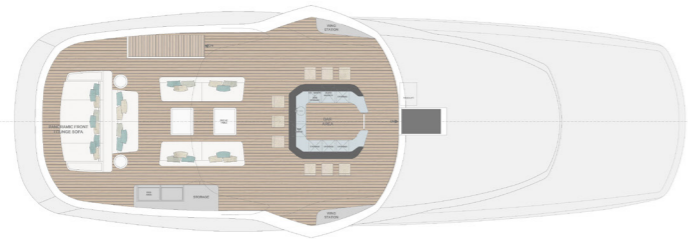
SIDE VIEW



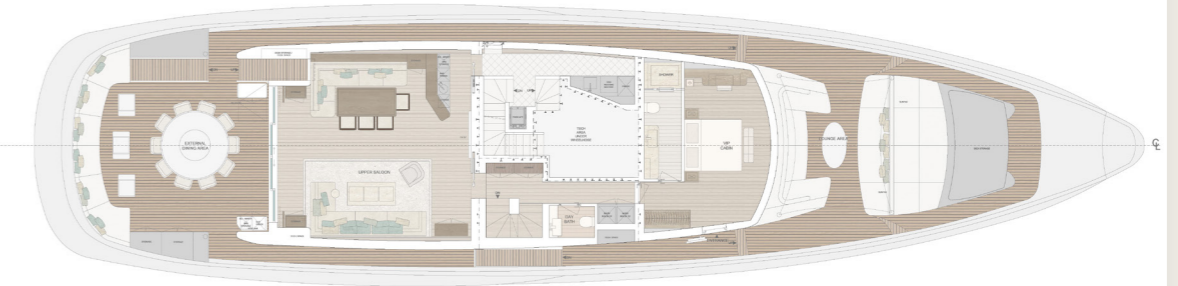
BRIDGE DECK



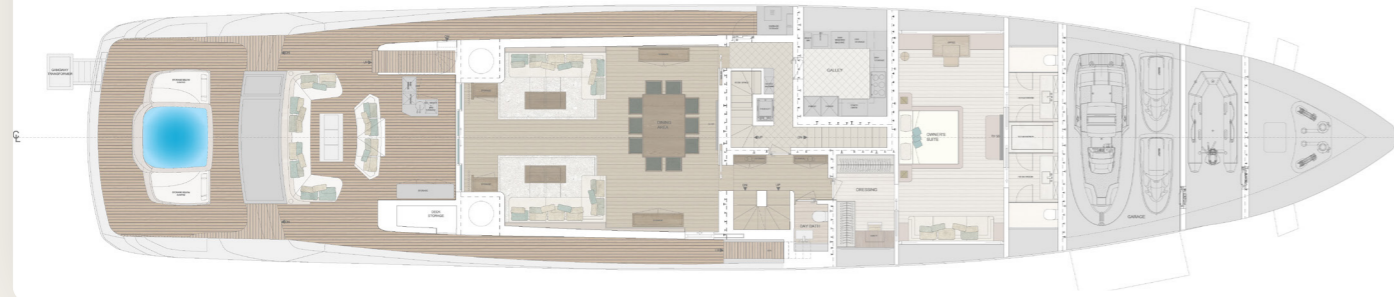
SUNDECK



UPPER DECK



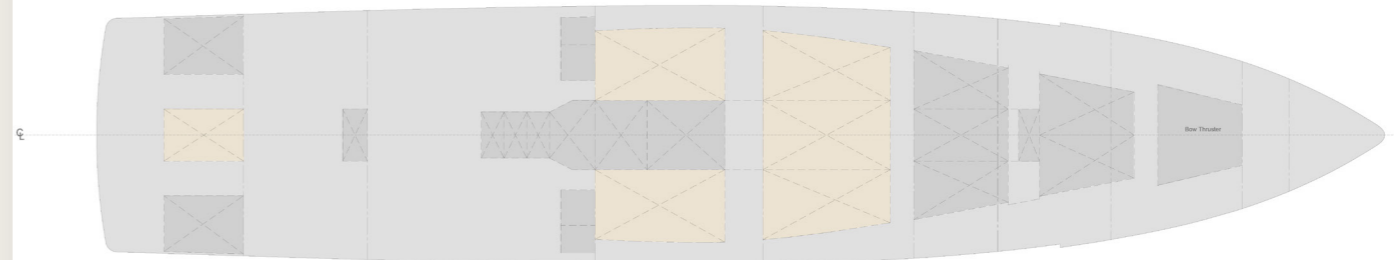
MAIN DECK



LOWER DECK



UNDER LOWER DECK





NL45+





MD Salon



MD Salon



MD Salon



MD Salon



MD Owner Cabin



MD Owner Cabin





MD Owner Cabin



MD Owner Cabin



UD Salon



UD Salon



UD Salon



UD Salon



UD VIP Cabin



UD VIP Cabin





UD VIP Cabin



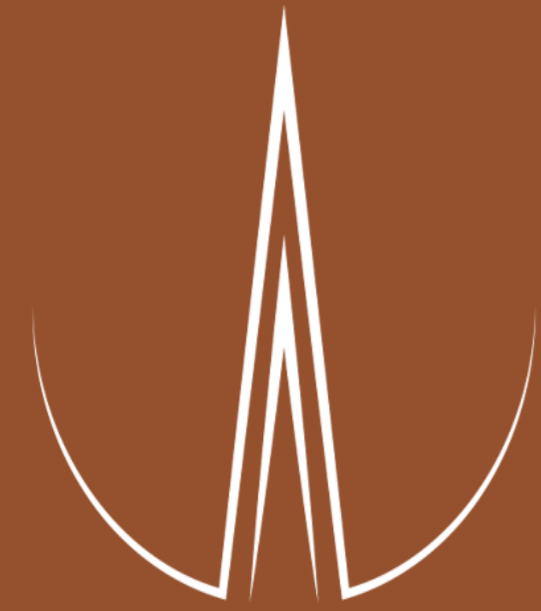
LD Guest Cabin



LD Guest Cabin



LD Guest Cabin



N O L I M I T S